

App Inventor



- Today we are going to start developing apps using a new tool called App Inventor.
- This tool is being developed by MIT (the same people who created Scratch).



App Inventor

- What is an app?
 - An app is a software program designed to run on smartphones, tablet computers and other mobile devices.
- What are the types of apps?
 - Utility, Entertainment, Game, News, Productivity and Social Media



App Inventor

- To use App Inventor you must install
 - Mozilla Firefox
 - <http://www.mozilla.org/en-GB/firefox/new/>
 - or
 - Google Chrome
 - <http://www.google.com/chrome/>
 - Currently App Inventor will not work with Microsoft Internet Explorer
- All the App Inventor projects are stored in the cloud, you must have an Internet connection
- To test your project you can
 - install the App Inventor Companion app to your Android mobile phone
 - <https://play.google.com/store/apps/details?id=edu.mit.appinventor.aicompanion3>
 - or
 - install the App Inventor software on your computer
 - <http://appinventor.mit.edu/explore/ai2/setup-emulator.html>



App Inventor

Step 1:

Install Firefox

or

Chrome



App Inventor

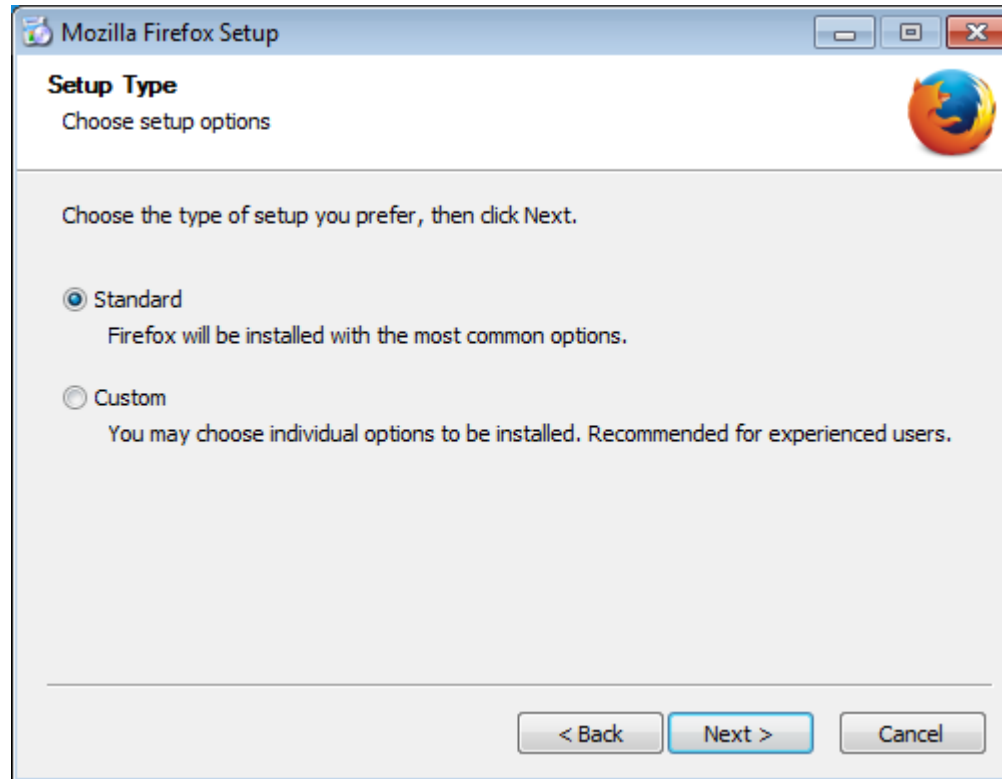
Install Firefox:





App Inventor

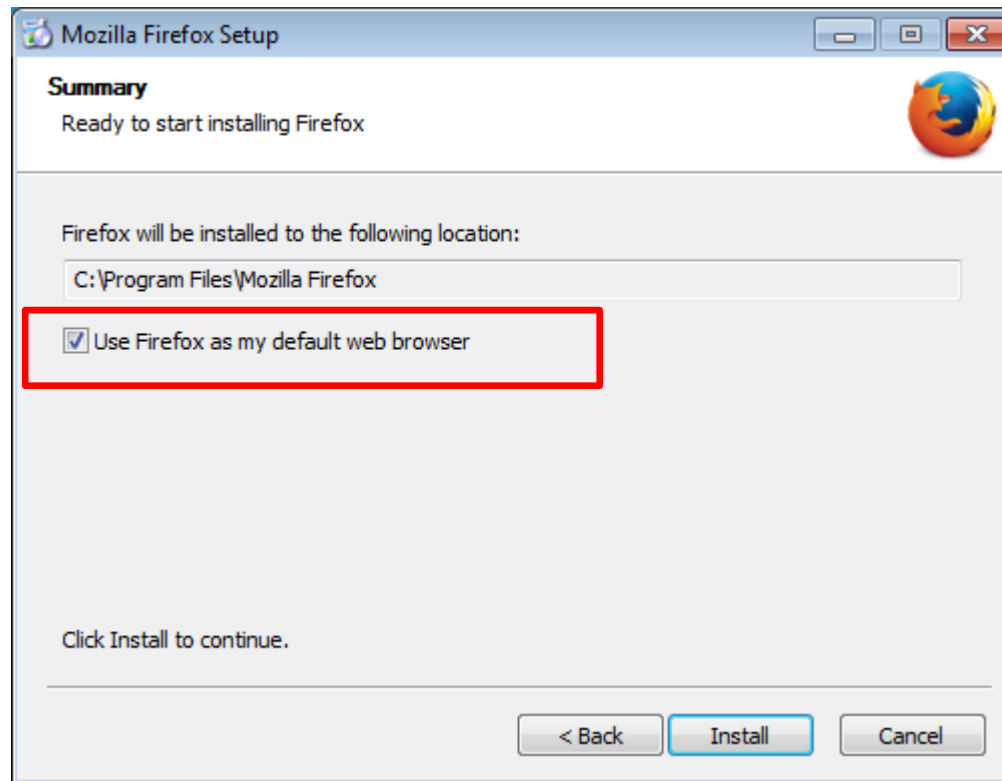
Firefox: Choose "Standard" install





App Inventor

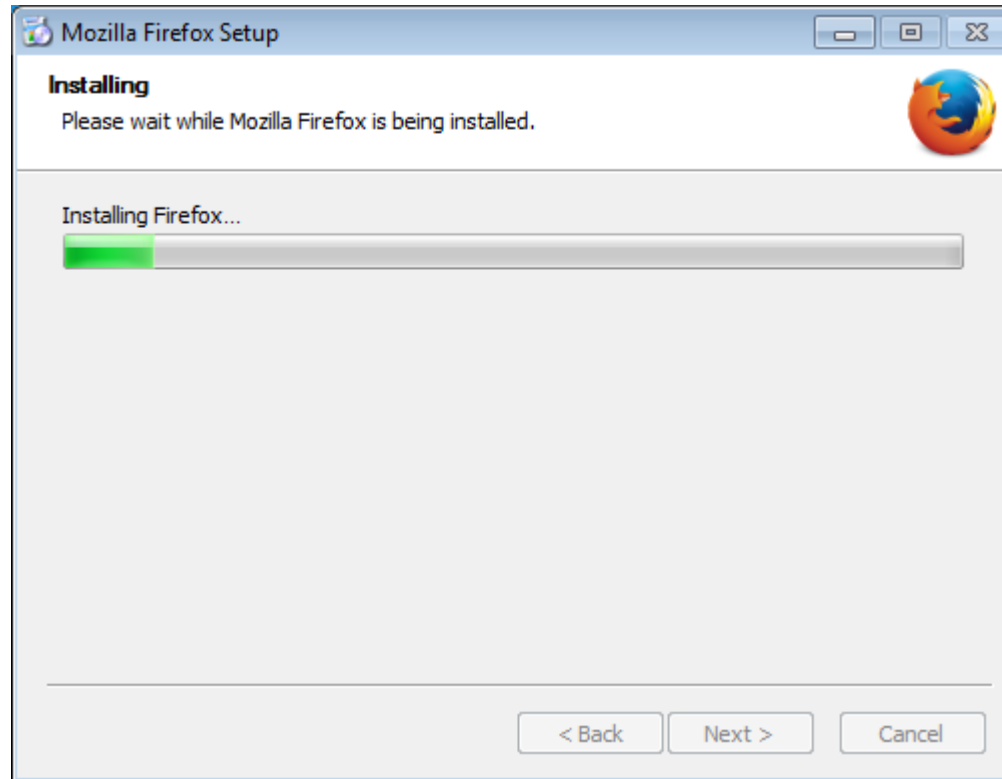
Firefox: Change default browser if you wish





App Inventor

Firefox: Allow installation to complete





App Inventor

Firefox: When finished click **Finish**





App Inventor

Step 2:

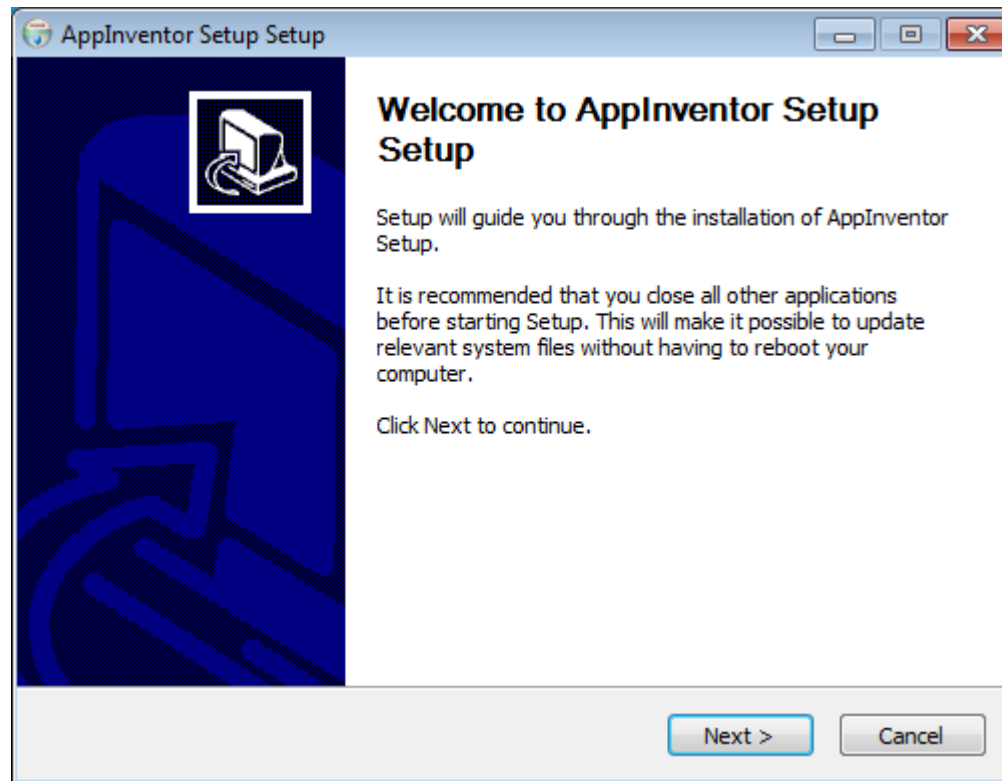
Install

App Inventor
software



App Inventor

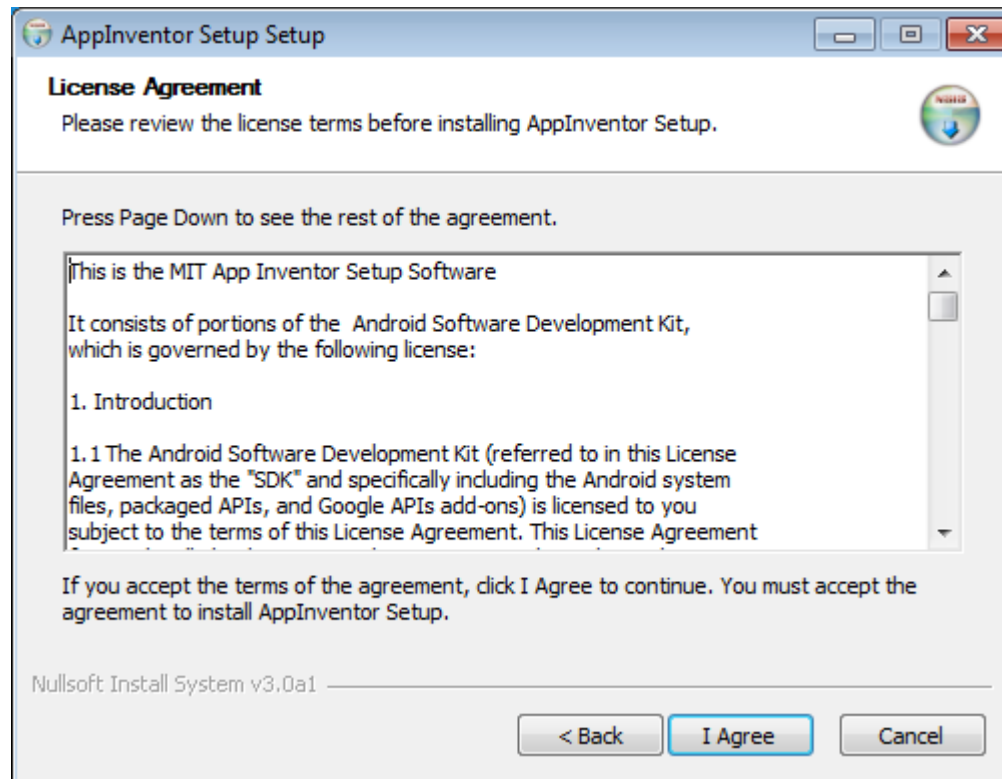
Install App Inventor software





App Inventor

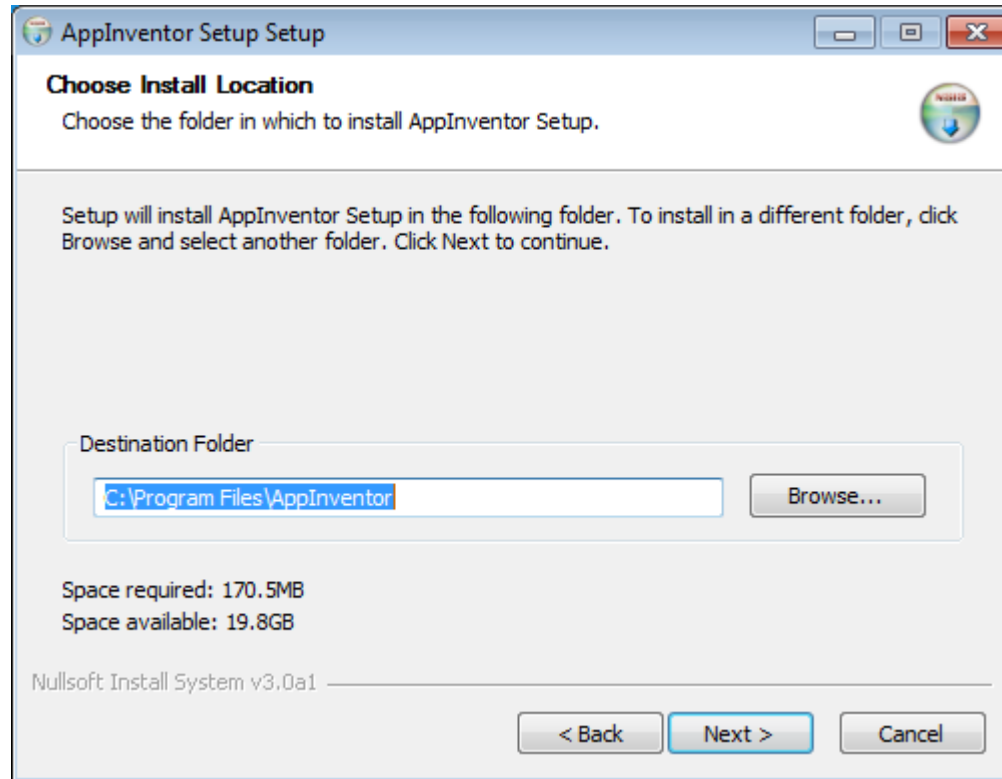
App Inventor: Agree to License





App Inventor

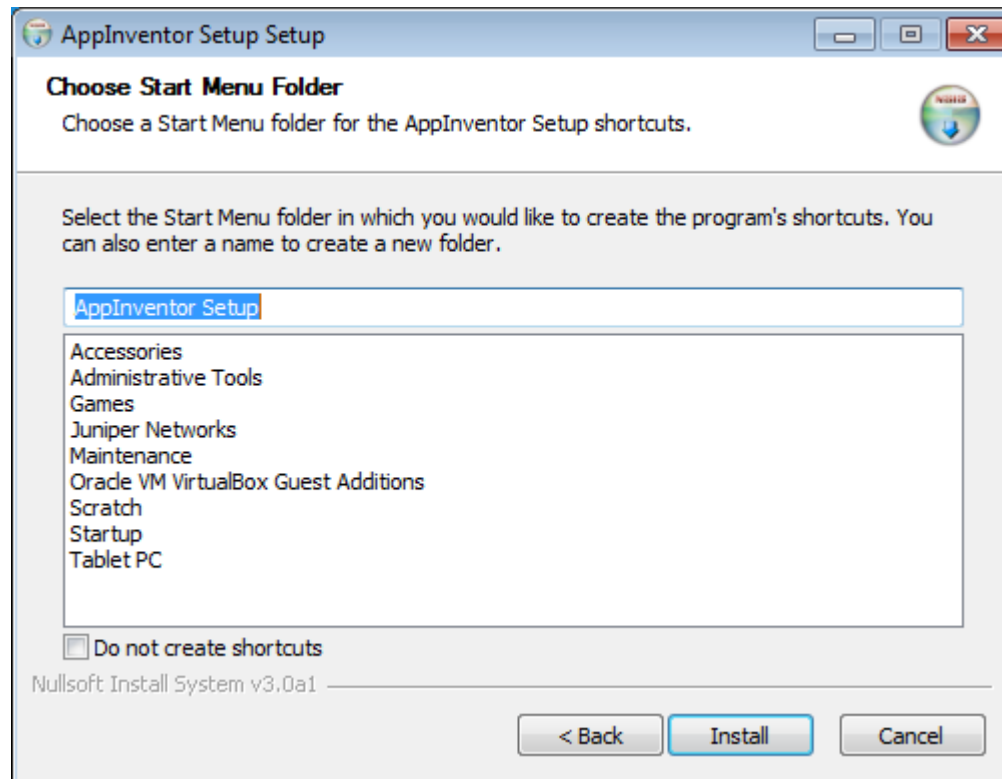
App Inventor: Do not change Install Location





App Inventor

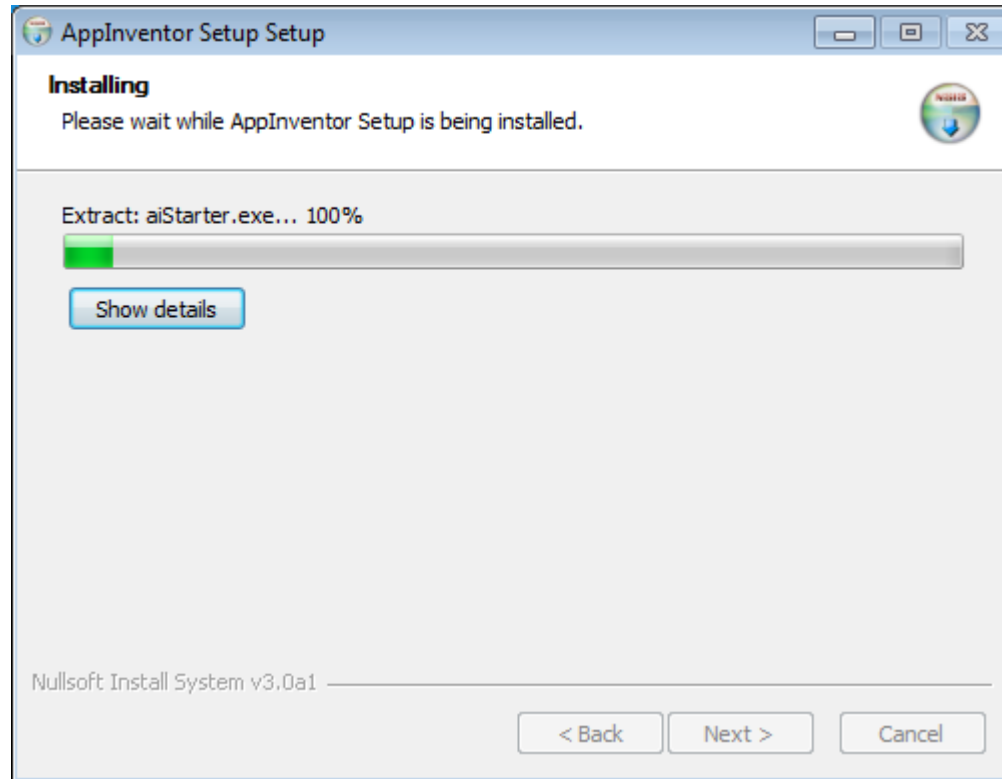
App Inventor: Click Install





App Inventor

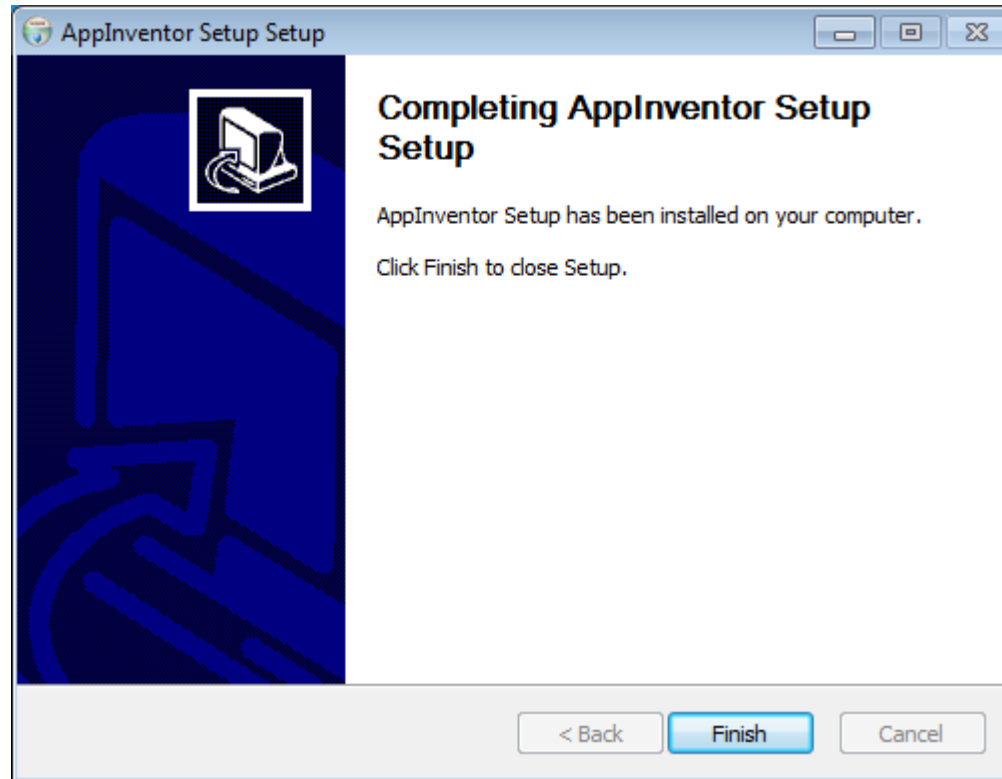
App Inventor: Allow software to install





App Inventor

App Inventor: **Click Finish**





App Inventor

Step 3:

Reboot your machine



App Inventor

After the reboot there is a new program is running. This program is used when you launch the Emulator.

A screenshot of a Windows application window titled "aiStarter". The window has a standard Windows title bar with minimize, maximize, and close buttons. The main content area is black with white text. The text reads: "Platform = Windows", "AppInventor tools located here: 'C:\Program Files'", "Bottle server starting up (using WSGIRefServer())...", "Listening on http://127.0.0.1:8004/", and "Hit Ctrl-C to quit.".

```
aiStarter
Platform = Windows
AppInventor tools located here: "C:\Program Files"
Bottle server starting up (using WSGIRefServer())...
Listening on http://127.0.0.1:8004/
Hit Ctrl-C to quit.
```



App Inventor

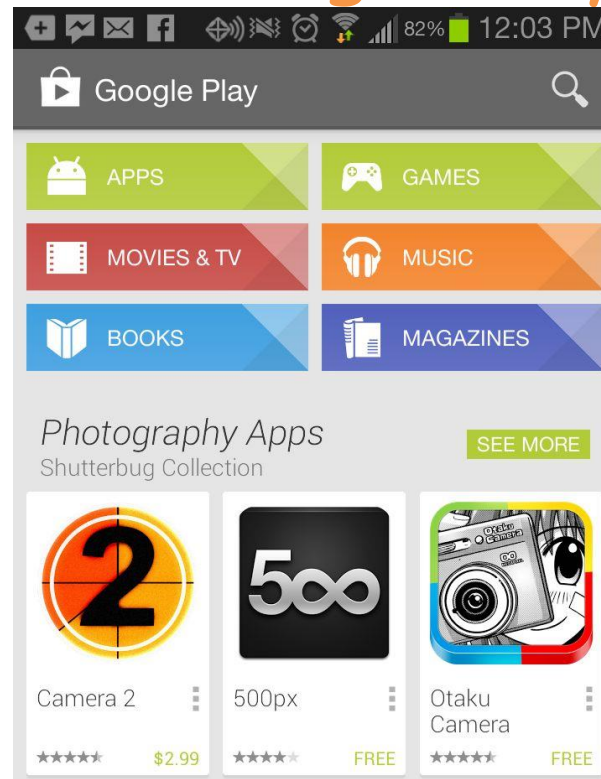
Or:

Install the App
Inventor Companion
app



App Inventor

Companion App: In your android mobile device launch the Google Play app





App Inventor

Companion App: Search for MIT AI2 Companion. Install the app





App Inventor

Step 4:

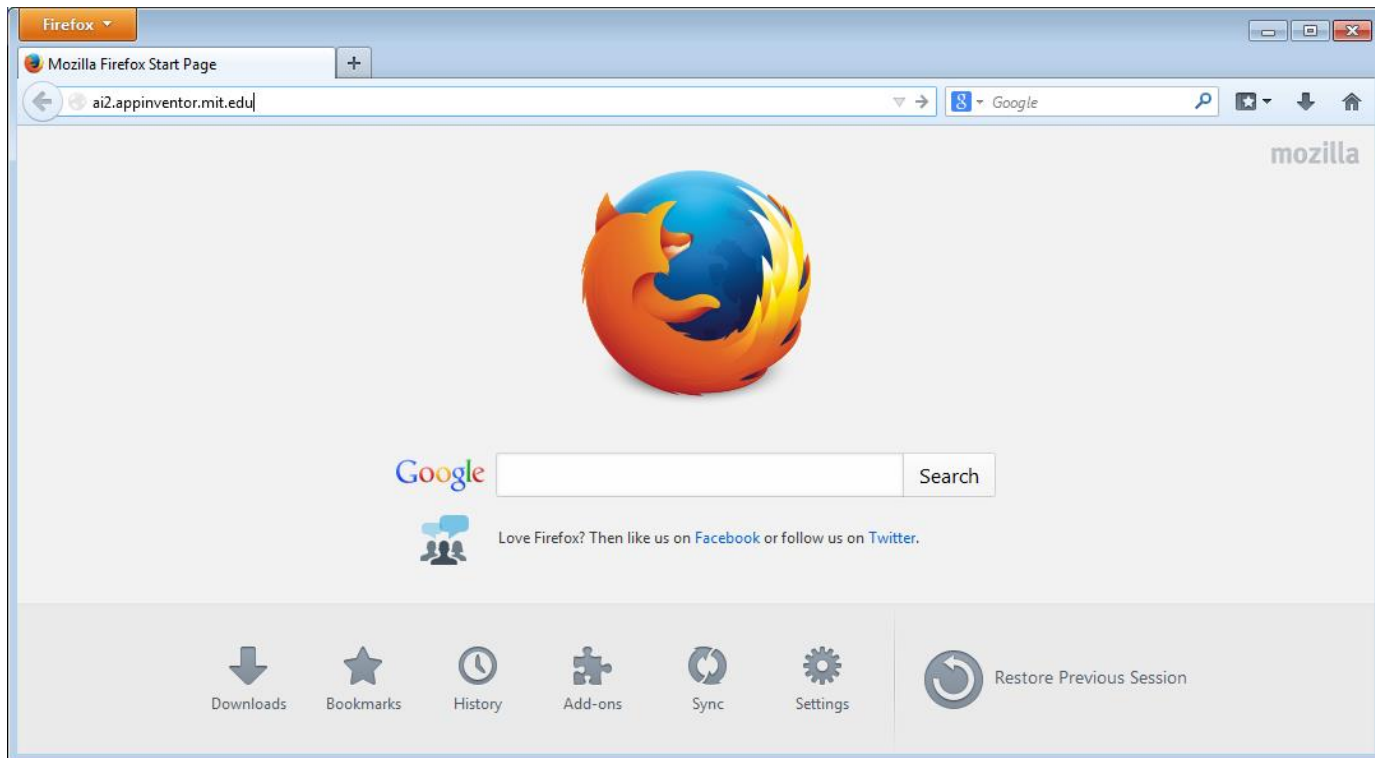
Login to App Inventor



App Inventor

Launch Firefox or Chrome

Type: `ai2.appinventor.mit.edu`





App Inventor

Enter your Gmail e-mail address and password

A screenshot of a web browser window showing the Google Accounts sign-in page. The browser's address bar displays the URL: https://accounts.google.com/ServiceLogin?service=ah&passive=true&continue=https%3A%2F%2Fappengine.go. The page features the Google logo at the top, followed by the text "One account. All of Google." and "Sign in with your Google Account". Below this is a central sign-in box containing a grey circular profile icon placeholder, an "Email" input field, a "Password" input field, and a blue "Sign in" button.



App Inventor

Welcome to App Inventor

The screenshot shows the MIT App Inventor 2 web interface. The browser window title is "MIT App Inventor 2" and the address bar shows "ai2.appinventor.mit.edu/#5117142080946176". The page header includes the MIT App Inventor 2 logo, the word "Beta", and navigation links: "Project", "Connect", "Build", "Help", "My Projects", "Guide", "Report an Issue", and "cdatheny.paul@gmail.com". Below the header is a green bar with "New Project" and "Delete Project" buttons. The main content area is titled "Projects" and contains a table with columns "Name" and "Date Created". A large green-bordered box is overlaid on the table, containing a welcome message and instructions. At the bottom of the page, there is a link for "Privacy Policy and Terms of Use".

MIT App Inventor 2
Beta

Project Connect Build Help My Projects Guide Report an Issue cdatheny.paul@gmail.com


New Project Delete Project

Projects

Name	Date Created
------	--------------

Welcome to App Inventor 2!

You don't have any projects in App Inventor 2 yet. To learn how to use App Inventor, click the "Guide" link at the upper right of the window; or to start your first project, click the "New" button at the upper left of the window.



Where did my projects go? If you had projects but now they're missing, you are probably looking for App Inventor version 1. It's still available here: beta.appinventor.mit.edu

Happy Inventing!

[Privacy Policy and Terms of Use](#)