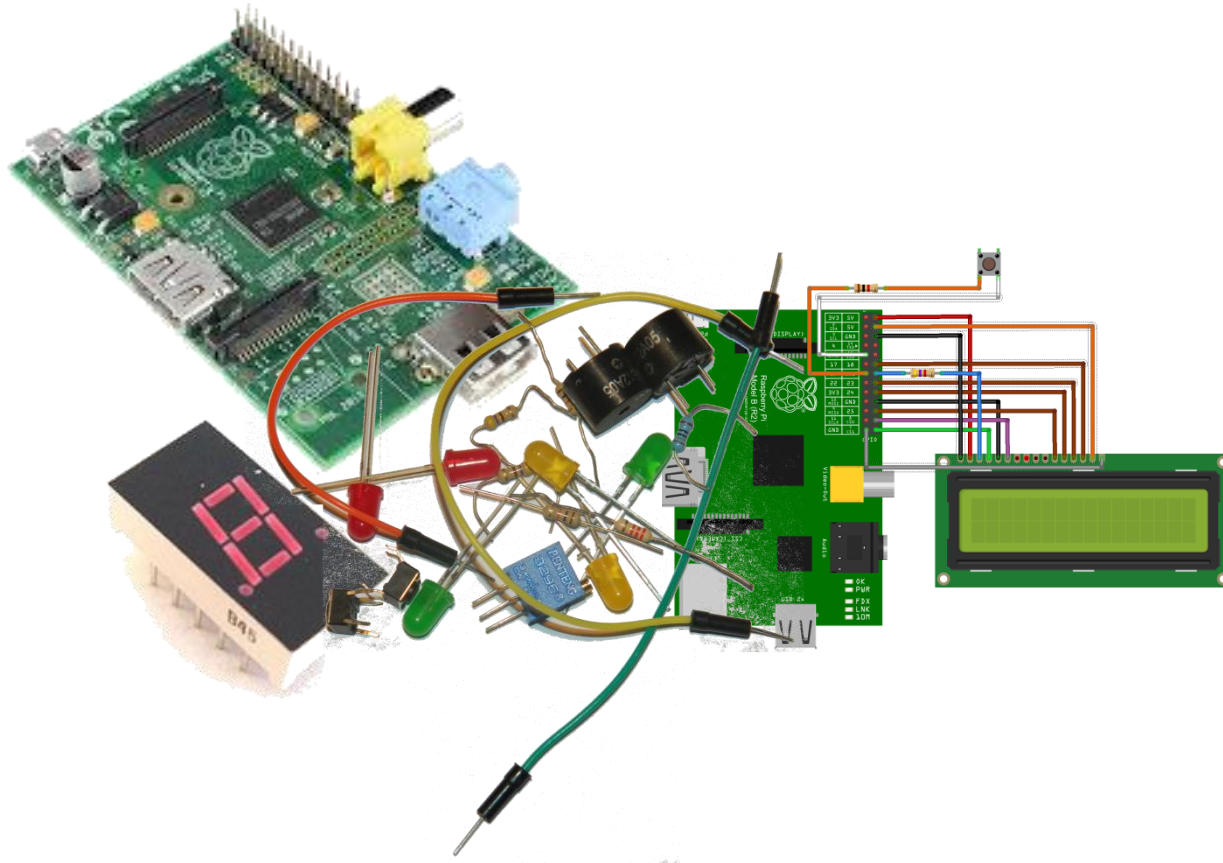


# Raspberry Pi and Electronics



# Raspberry Pi

Today we're going to look at how we might store data in a form that makes it easy to share with other programmes that might need access to it or for sharing with other people

# Spreadsheets

A **spreadsheet** is an interactive computer application for organization, analysis and storage of data in tabular form.

The program operates on data contained in cells, organized in rows and columns.

Each cell may contain either numeric or text data, or the results of formulas that automatically calculate and display a value based on the contents of other cells.

# XLWT

XLWT (ExceL WriTe) is a Python Module used for creating spreadsheets. It is pretty easy to use but one problem with it is that it can only write new spreadsheet not edit existing ones. However this is a good place for us to start. For more information check out this tutorial.

<http://www.saltycrane.com/blog/2010/02/using-python-write-excel-openoffice-calc-spreadsheet-ubuntu-linux/>